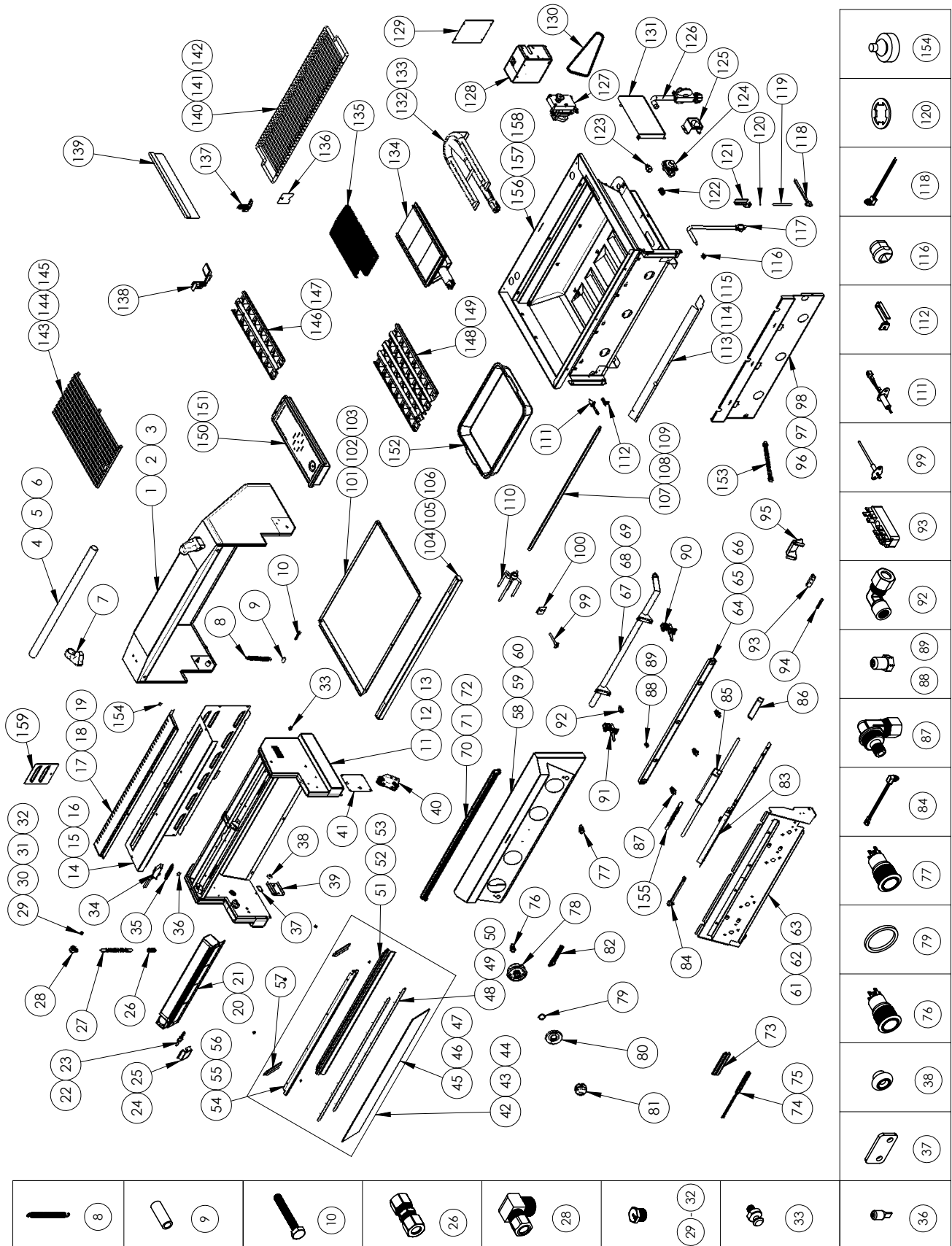


# EAGLE ONE EXPLODED VIEW



# REPLACEMENT PARTS LIST

ITEM NO.	TE PART NUMBER	DESCRIPTION	TE1BQ 54RSN	TE1BQ 54RSL
1	S27211-36WY	36 FRONT HOOD WELDED ASSEMBLY	-	-
2	S27211-42WY	42 FRONT HOOD WELDED ASSEMBLY	-	-
3	S27211-54WY	54 FRONT HOOD WELDED ASSEMBLY	1	1
4	S12368-36	HOOD HANDLE (Ø1.25" X 27.85")	-	-
5	S12368-42	HOOD HANDLE (Ø1.25" X 33.85")	-	-
6	S12368-54	HOOD HANDLE (Ø1.25" X 45.85")	1	1
7	S13284	HANDLE END CAP	2	2
8	S14226	HOOD SPRING	2	2
9	S14340	HOOD SLEEVE	2	2
10	S14303	.25 x 1.75 SS HEX HEAD HOOD SCREW	2	2
11	S27216-36Y	36 REAR HOOD ASSEMBLY	-	-
12	S27216-42Y	42 REAR HOOD ASSEMBLY	-	-
13	S27216-54Y	54 REAR HOOD ASSEMBLY	1	1
14	S27234-36	36 REAR HOOD COVER	-	-
15	S27234-42	42 REAR HOOD COVER	-	-
16	S27234-54	54 REAR HOOD COVER	1	1
17	S27235-36	36 FLUE COVER	-	-
18	S27235-42	42 FLUE COVER	-	-
19	S27235-54	54 FLUE COVER	1	1
20	S13411	INFRARED BURNER - SMALL	2	2
21	S13412	INFRARED BURNER - LARGE	-	-
22	S16322	ROTIS IGNITER	1	1
23	S16423	RIGHT HAND ROTIS IGNITER	1	1
24	S27219-L	I.R. HOOD - LH	1	1
25	S27219-R	I.R. HOOD - RH	1	1
26	S12696	COMPRESSION, TUBE FITTING, 3/8 CC X 3/8 CC	3	3
27	S12421	FLEX TUBE, 3/8 CC X 40"	2	2
28	S12640	ELBOW	2	2
29	S15108-48	ORIFICE #48, NG	2	-
30	S15108-55	ORIFICE #55, LP	-	2
31	S15108-41	ORIFICE #41, NG	-	-
32	S15108-53	ORIFICE #53, LP	-	-
33	S14194	SPRING STANDOFF	2	2
34	S16240	HALOGEN LIGHT BODY	3	3
35	S16241	COVER LENS	3	3
36	S16191	BULB, HALOGEN LIGHT	3	3
37	S26310	ROTIS PLATE SPACER	4	4
38	S14420	ROLLER BEARING	4	4
39	S27236	WARMING RACK BRACKET	2	2
40	S26308Y	SPROCKET ASSEMBLY	1	1
41	S27232	SPROCKET COVER	1	1
42	S27225-36Y	INFRARED GLASS ASSEMBLY, 36	-	-
43	S27225-42Y	INFRARED GLASS ASSEMBLY, 42	-	-
44	S27225-54Y	INFRARED GLASS ASSEMBLY, 54	1	1

N = NATURAL GAS  
L = PROPANE

# REPLACEMENT PARTS LIST - cont.

ITEM NO.	TE PART NUMBER	DESCRIPTION	TE1BQ 54RSN	TE1BQ 54RSL
45	S14532-36	INFRARED GLASS, 36	-	-
46	S14532-42	INFRARED GLASS, 42	-	-
47	S14532-54	INFRARED GLASS, 54	1	1
48	S27223-36	GLASS GASKET, 36	-	-
49	S27223-42	GLASS GASKET, 42	-	-
50	S27223-54	GLASS GASKET, 54	2	2
51	S27227-36	INFRARED GLASS BOTTOM TRIM ASSEMBLY, 36	-	-
52	S27227-42	INFRARED GLASS BOTTOM TRIM ASSEMBLY, 42	-	-
53	S27227-54	INFRARED GLASS BOTTOM TRIM ASSEMBLY, 54	1	1
54	S27225-36WY	INFRARED GLASS TOP TRIM WELDED ASSEMBLY, 36	-	-
55	S27225-42WY	INFRARED GLASS TOP TRIM WELDED ASSEMBLY, 42	-	-
56	S27225-54WY	INFRARED GLASS TOP TRIM WELDED ASSEMBLY, 54	1	1
57	S27229	VERTICAL GLASS CHANNEL	3	3
58	S27200-36WY	36 FRONT PANEL WELDED ASSEMBLY	-	-
59	S27200-42WY	42 FRONT PANEL WELDED ASSEMBLY	-	-
60	S27200-54WY	54 FRONT PANEL WELDED ASSEMBLY	1	1
61	S27202-36WY	36 FRONT INNER PANEL WELDED ASSEMBLY	-	-
62	S27202-42WY	42 FRONT INNER PANEL WELDED ASSEMBLY	-	-
63	S27202-54WY	54 FRONT INNER PANEL WELDED ASSEMBLY	1	1
64	S27205-36	36 ELBOW PANEL	-	-
65	S27205-42	42 ELBOW PANEL	-	-
66	S27205-54	54 EBOW PANEL	1	1
67	S12764-36Y	36 MANIFOLD ASSEMBLY	-	-
68	S12764-42Y	42 MANIFOLD ASSEMBLY	-	-
69	S12764-54Y	54 MANIFOLD ASSEMBLY	1	1
70	S13228-36	MOOD LIGHT, 36	-	-
71	S13228-42	MOOD LIGHT, 42	-	-
72	S13228-54	MOOD LIGHT, 54	1	1
73	S27204	TEMP STRIP BRACKET	1	1
74	S16028	36 / 42 TEMP STRIP	-	-
75	S16034	54 TEMP STRIP	1	1
76	S16196	12V ILLUMINATED SWITCH	1	1
77	S16365	110V ILLUMINATED SWITCH	1	1
78	S13273	LIGHT BEZEL ASSEMBLY	6	6
79	S13279	BEZEL O-RING	6	6
80	S13224	BEZEL LENS	6	6
81	S13283	KNOB ASSEMBLY	6	6
82	S13287	EAGLE ONE EMBLEM	1	1
83	S16020	CONTROL MODULE	1	1
84	S16042Y	RESET SWITCH	1	1
85	S16385	MEANWELL TRANSFORMER (LPVL-150-12)	1	1
86	S16426	MEANWELL POWER SUPPLY ASSY. (LPV-20-5 15W 5V)	1	1
87	S12603	ELBOW MIXER	4	4
88	S15110-41	ORIFICE, #41, 1/8 NPT	4	-

# REPLACEMENT PARTS LIST - cont.

ITEM NO.	TE PART NUMBER	DESCRIPTION	TE1BQ 54RSN	TE1BQ 54RSL
89	S15110-53	ORIFICE, #53, 1/8 NPT	-	4
90	S15152	STRAIGHT VALVE W/ MICROSWITCH	4	4
91	S15153	STRAIGHT VALVE W/ MICROSWITCH & CONSTANT ON	2	2
92	S12601	ELBOW	6	6
93	S16386	TERMINAL BLOCK	1	1
94	S19195	TERMINAL BLOCK LABEL	1	1
95	S26372	TERMINAL BLOCK COVER	1	1
96	S27242-36	36 FRONT AIR BAFFLE	-	-
97	S27242-42	42 FRONT AIR BAFFLE	-	-
98	S27242-54	54 FRONT AIR BAFFLE	1	1
99	S16031	TEMP PROBE	4	4
100	S26344	IGNITION COVER	4	4
101	S26319-36	36 DRIP PAN	-	-
102	S26319-42	42 DRIP PAN	-	-
103	S26319-54	54 DRIP PAN	1	1
104	S27208-36WY	36 DRIP PAN HANDLE WELDED ASSEMBLY	-	-
105	S27208-42WY	42 DRIP PAN HANDLE WELDED ASSEMBLY	-	-
106	S27208-54WY	54 DRIP PAN HANDLE WELDED ASSEMBLY	1	1
107	S13928-36	SPIT ROD, 36	-	-
108	S13928-42	SPIT ROD, 42	-	-
109	S13928-54	SPIT ROD, 54	1	1
110	S13865	MEAT HOLDER FORKS (PAIR)	1	1
111	S16321	IGNITER	4	4
112	S27377	IGNITER SHIELD	4	4
113	S27243-36	36 BOTTOM VALVE PANEL	-	-
114	S27243-42	42 BOTTOM VALVE PANEL	-	-
115	S27243-54	54 BOTTOM VALVE PANEL	1	1
116	S16112	STRAIN RELIEF	1	1
117	S16111	ELECTRICAL CORD	1	1
118	S16194	HOOD SWITCH	1	1
119	S12112	SWITCH ROD	1	1
120	S14232	RETENTION RING	1	1
121	S21756	HOOD SWITCH BRACKET	1	1
122	S12618	.5 NIPPLE	2	2
123	S12602	BRASS COUPLING	1	1
124	S15303	NG REGULATOR	1	1
125	S26713	REGULATOR BRACKET	1	1
126	S15302-GR150	LP REGULATOR W/ HOSE	-	1
127	S16366	ROTIS MOTOR	1	1
128	S26349	ROTIS MOTOR HOUSING	1	1
129	S26351	ROTIS HOUSING COVER	1	1
130	S13932	CHAIN	1	1
131	S26352	CHAIN GUARD	1	1
132	S13301	U6-BURNER	3	3

# REPLACEMENT PARTS LIST - cont.

ITEM NO.	TE PART NUMBER	DESCRIPTION	TE1BQ 54RSN	TE1BQ 54RSL
133	S13350	U5-BURNER	-	-
134	S13345	SEAR BURNER ASSEMBLY	1	1
135	S13144	SEAR BURNER MESH SCREEN	1	1
136	S26345	BURNER DOOR	3	3
137	S27378WY	U-BURNER FLASHTUBE	3	3
138	S27380WY	SEAR ZONE FLASH TUBE	1	1
139	S21743	DIVIDER	3	3
140	S13954-36	36 WARMING RACK	-	-
141	S13954-42	42 WARMING RACK	-	-
142	S13954-54	54 WARMING RACK	1	1
143	S13951	HEX GRATES, 10.5625	-	-
144	S13952	HEX GRATES, 12	2	2
145	S13953	HEX GRATES, 12.8125	2	2
146	S27387Y	5" BRIQUETTE TRAY ASSEMBLY	-	-
147	S27389Y	6" BRIQUETTE TRAY ASSEMBLY	2	2
148	S27386Y	10" BRIQUETTE TRAY ASSEMBLY	-	-
149	S27388Y	12" BRIQUETTE TRAY ASSEMBLY	2	2
150	S22737Y	36 SMOKER BOX ASSEMBLY	-	-
151	S22735Y	42 / 54 SMOKER BOX ASSEMBLY	1	1
152	S13803	BASTING PAN	2	2
153	S12420	.375 X 9 FLEX TUBE	1	1
154	S14128	RUBBER BUMPER	4	4
155	S12407	.375 X 7.5 FLEX TUBE	6	6
156	S27237-36WY	36 FIREBOX WELDED ASSEMBLY	-	-
157	S27237-42WY	42 FIREBOX WELDED ASSEMBLY	-	-
158	S27237-54WY	54 FIREBOX WELDED ASSEMBLY	1	1
159	S27394	ACCESS COVER	2	2
<b>PARTS NOT SHOWN</b>				
159	S16022	WIRE HARNESS, 13IN. SWITCH TO MASTER CONTROL	1	1
160	S16023	WIRE HARNESS, 14IN. KNOB TO MASTER CONTROL	-	-
161	S16024	WIRE HARNESS, 20IN. KNOB TO MASTER CONTROL	2	2
162	S16025	WIRE HARNESS, 26IN. KNOB TO MASTER CONTROL	4	4
163	S16026	WIRE HARNESS, 33IN. KNOB TO MASTER CONTROL	2	2
164	S16027	WIRE HARNESS, 34IN. SWITCH TO MASTER CONTROL	3	3
165	S16037	WIRE HARNESS, ROTISSERIE	1	1
166	S16038	WIRE HARNESS, FRONT PANEL (36, 42)	-	-
167	S16039	WIRE HARNESS, FRONT PANEL (54)	1	1