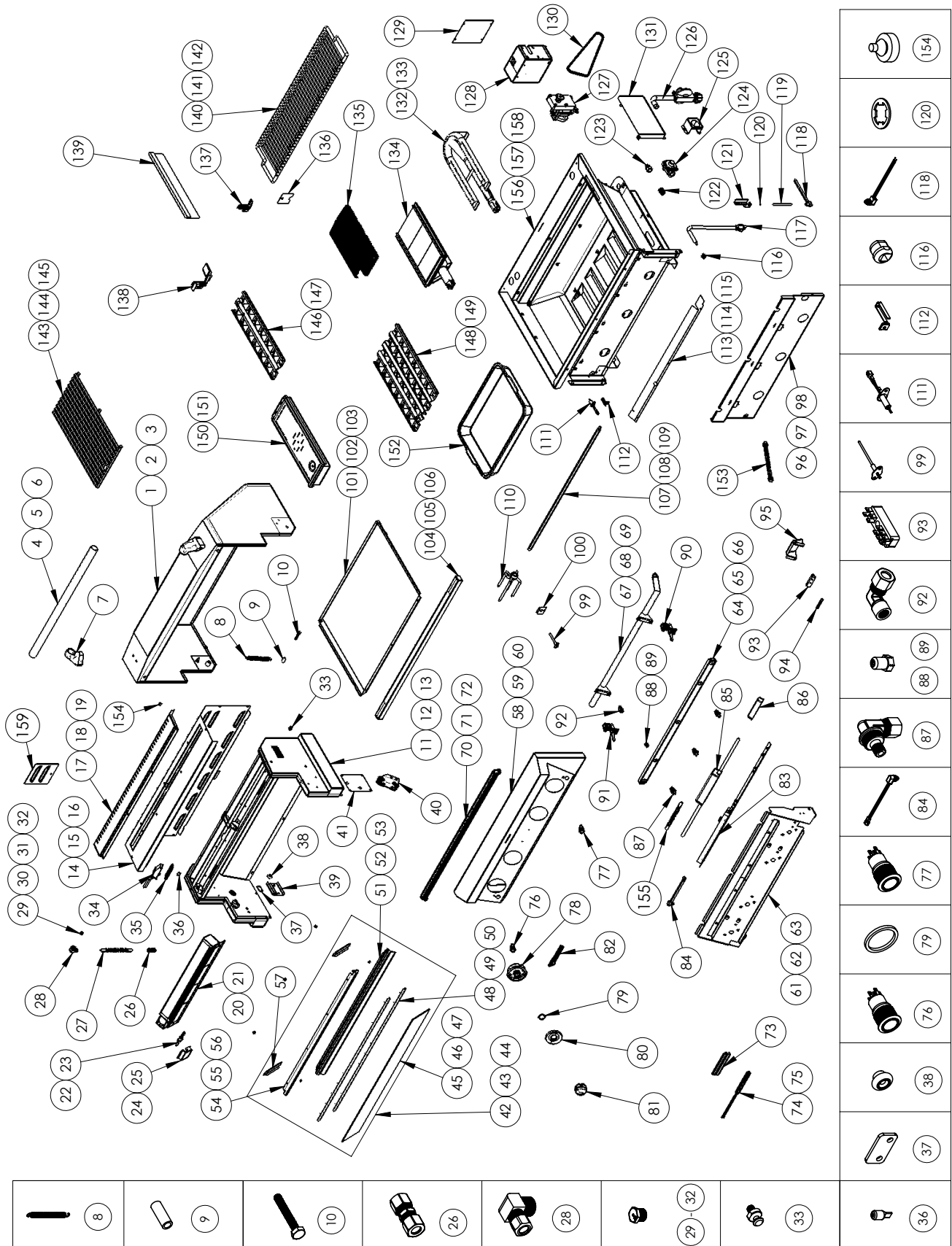


# EAGLE ONE EXPLODED VIEW



# REPLACEMENT PARTS LIST

ITEM NO.	TE PART NUMBER	DESCRIPTION	TE1BQ 42RSN	TE1BQ 42RSL
1	S27211-36WY	36 FRONT HOOD WELDED ASSEMBLY	-	-
2	S27211-42WY	42 FRONT HOOD WELDED ASSEMBLY	1	1
3	S27211-54WY	54 FRONT HOOD WELDED ASSEMBLY	-	-
4	S12368-36	HOOD HANDLE (Ø1.25" X 27.85")	-	-
5	S12368-42	HOOD HANDLE (Ø1.25" X 33.85")	1	1
6	S12368-54	HOOD HANDLE (Ø1.25" X 45.85")	-	-
7	S13284	HANDLE END CAP	2	2
8	S14226	HOOD SPRING	2	2
9	S14340	HOOD SLEEVE	2	2
10	S14303	.25 x 1.75 SS HEX HEAD HOOD SCREW	2	2
11	S27216-36Y	36 REAR HOOD ASSEMBLY	-	-
12	S27216-42Y	42 REAR HOOD ASSEMBLY	1	1
13	S27216-54Y	54 REAR HOOD ASSEMBLY	-	-
14	S27234-36	36 REAR HOOD COVER	-	-
15	S27234-42	42 REAR HOOD COVER	1	1
16	S27234-54	54 REAR HOOD COVER	-	-
17	S27235-36	36 FLUE COVER	-	-
18	S27235-42	42 FLUE COVER	1	1
19	S27235-54	54 FLUE COVER	-	-
20	S13411	INFRARED BURNER - SMALL	-	-
21	S13412	INFRARED BURNER - LARGE	1	1
22	S16322	ROTIS IGNITER	1	1
23	S16423	RIGHT HAND ROTIS IGNITER	-	-
24	S27219-L	I.R. HOOD - LH	1	1
25	S27219-R	I.R. HOOD - RH	-	-
26	S12696	COMPRESSION, TUBE FITTING, 3/8 CC X 3/8 CC	1	1
27	S12421	FLEX TUBE, 3/8 CC X 40"	1	1
28	S12640	ELBOW	1	1
29	S15108-48	ORIFICE #48, NG	-	-
30	S15108-55	ORIFICE #55, LP	-	-
31	S15108-41	ORIFICE #41, NG	1	-
32	S15108-53	ORIFICE #53, LP	-	1
33	S14194	SPRING STANDOFF	2	2
34	S16240	HALOGEN LIGHT BODY	2	2
35	S16241	COVER LENS	2	2
36	S16191	BULB, HALOGEN LIGHT	2	2
37	S26310	ROTIS PLATE SPACER	4	4
38	S14420	ROLLER BEARING	4	4
39	S27236	WARMING RACK BRACKET	2	2
40	S26308Y	SPROCKET ASSEMBLY	1	1
41	S27232	SPROCKET COVER	1	1
42	S27225-36Y	INFRARED GLASS ASSEMBLY, 36	-	-
43	S27225-42Y	INFRARED GLASS ASSEMBLY, 42	1	1
44	S27225-54Y	INFRARED GLASS ASSEMBLY, 54	-	-

N = NATURAL GAS  
L = PROPANE

# REPLACEMENT PARTS LIST - cont.

ITEM NO.	TE PART NUMBER	DESCRIPTION	TE1BQ 42RSN	TE1BQ 42RSL
45	S14532-36	INFRARED GLASS, 36	-	-
46	S14532-42	INFRARED GLASS, 42	1	1
47	S14532-54	INFRARED GLASS, 54	-	-
48	S27223-36	GLASS GASKET, 36	-	-
49	S27223-42	GLASS GASKET, 42	2	2
50	S27223-54	GLASS GASKET, 54	-	-
51	S27227-36	INFRARED GLASS BOTTOM TRIM ASSEMBLY, 36	-	-
52	S27227-42	INFRARED GLASS BOTTOM TRIM ASSEMBLY, 42	1	1
53	S27227-54	INFRARED GLASS BOTTOM TRIM ASSEMBLY, 54	-	-
54	S27225-36WY	INFRARED GLASS TOP TRIM WELDED ASSEMBLY, 36	-	-
55	S27225-42WY	INFRARED GLASS TOP TRIM WELDED ASSEMBLY, 42	1	1
56	S27225-54WY	INFRARED GLASS TOP TRIM WELDED ASSEMBLY, 54	-	-
57	S27229	VERTICAL GLASS CHANNEL	2	2
58	S27200-36WY	36 FRONT PANEL WELDED ASSEMBLY	-	-
59	S27200-42WY	42 FRONT PANEL WELDED ASSEMBLY	1	1
60	S27200-54WY	54 FRONT PANEL WELDED ASSEMBLY	-	-
61	S27202-36WY	36 FRONT INNER PANEL WELDED ASSEMBLY	-	-
62	S27202-42WY	42 FRONT INNER PANEL WELDED ASSEMBLY	1	1
63	S27202-54WY	54 FRONT INNER PANEL WELDED ASSEMBLY	-	-
64	S27205-36	36 ELBOW PANEL	-	-
65	S27205-42	42 ELBOW PANEL	1	1
66	S27205-54	54 EBOW PANEL	-	-
67	S12764-36Y	36 MANIFOLD ASSEMBLY	-	-
68	S12764-42Y	42 MANIFOLD ASSEMBLY	1	1
69	S12764-54Y	54 MANIFOLD ASSEMBLY	-	-
70	S13228-36	MOOD LIGHT, 36	-	-
71	S13228-42	MOOD LIGHT, 42	1	1
72	S13228-54	MOOD LIGHT, 54	-	-
73	S27204	TEMP STRIP BRACKET	1	1
74	S16028	36 / 42 TEMP STRIP	1	1
75	S16034	54 TEMP STRIP	-	-
76	S16196	12V ILLUMINATED SWITCH	1	1
77	S16365	110V ILLUMINATED SWITCH	1	1
78	S13273	LIGHT BEZEL ASSEMBLY	4	4
79	S13279	BEZEL O-RING	4	4
80	S13224	BEZEL LENS	4	4
81	S13283	KNOB ASSEMBLY	4	4
82	S13287	EAGLE ONE EMBLEM	1	1
83	S16020	CONTROL MODULE	1	1
84	S16042Y	RESET SWITCH	1	1
85	S16385	MEANWELL TRANSFORMER (LPVL-150-12)	1	1
86	S16426	MEANWELL POWER SUPPLY ASSY. (LPV-20-5 15W 5V)	1	1
87	S12603	ELBOW MIXER	3	3
88	S15110-41	ORIFICE, #41, 1/8 NPT	3	-

# REPLACEMENT PARTS LIST - cont.

ITEM NO.	TE PART NUMBER	DESCRIPTION	TE1BQ 42RSN	TE1BQ 42RSL
89	S15110-53	ORIFICE, #53, 1/8 NPT	-	3
90	S15152	STRAIGHT VALVE W/ MICROSWITCH	3	3
91	S15153	STRAIGHT VALVE W/ MICROSWITCH & CONSTANT ON	1	1
92	S12601	ELBOW	4	4
93	S16386	TERMINAL BLOCK	1	1
94	S19195	TERMINAL BLOCK LABEL	1	1
95	S26372	TERMINAL BLOCK COVER	1	1
96	S27242-36	36 FRONT AIR BAFFLE	-	-
97	S27242-42	42 FRONT AIR BAFFLE	1	1
98	S27242-54	54 FRONT AIR BAFFLE	-	-
99	S16031	TEMP PROBE	3	3
100	S26344	IGNITION COVER	3	3
101	S26319-36	36 DRIP PAN	-	-
102	S26319-42	42 DRIP PAN	1	1
103	S26319-54	54 DRIP PAN	-	-
104	S27208-36WY	36 DRIP PAN HANDLE WELDED ASSEMBLY	-	-
105	S27208-42WY	42 DRIP PAN HANDLE WELDED ASSEMBLY	1	1
106	S27208-54WY	54 DRIP PAN HANDLE WELDED ASSEMBLY	-	-
107	S13928-36	SPIT ROD, 36	-	-
108	S13928-42	SPIT ROD, 42	1	1
109	S13928-54	SPIT ROD, 54	-	-
110	S13865	MEAT HOLDER FORKS (PAIR)	1	1
111	S16321	IGNITER	3	3
112	S27377	IGNITER SHIELD	3	3
113	S27243-36	36 BOTTOM VALVE PANEL	-	-
114	S27243-42	42 BOTTOM VALVE PANEL	1	1
115	S27243-54	54 BOTTOM VALVE PANEL	-	-
116	S16112	STRAIN RELIEF	1	1
117	S16111	ELECTRICAL CORD	1	1
118	S16194	HOOD SWITCH	1	1
119	S12112	SWITCH ROD	1	1
120	S14232	RETENTION RING	1	1
121	S21756	HOOD SWITCH BRACKET	1	1
122	S12618	.5 NIPPLE	2	2
123	S12602	BRASS COUPLING	1	1
124	S15303	NG REGULATOR	1	1
125	S26713	REGULATOR BRACKET	1	1
126	S15302-GR150	LP REGULATOR W/ HOSE	-	1
127	S16366	ROTIS MOTOR	1	1
128	S26349	ROTIS MOTOR HOUSING	1	1
129	S26351	ROTIS HOUSING COVER	1	1
130	S13932	CHAIN	1	1
131	S26352	CHAIN GUARD	1	1
132	S13301	U6-BURNER	2	2

# REPLACEMENT PARTS LIST - cont.

ITEM NO.	TE PART NUMBER	DESCRIPTION	TE1BQ 42RSN	TE1BQ 42RSL
133	S13350	U5-BURNER	-	-
134	S13345	SEAR BURNER ASSEMBLY	1	1
135	S13144	SEAR BURNER MESH SCREEN	1	1
136	S26345	BURNER DOOR	2	2
137	S27378WY	U-BURNER FLASHTUBE	2	2
138	S27380WY	SEAR ZONE FLASH TUBE	1	1
139	S21743	DIVIDER	2	2
140	S13954-36	36 WARMING RACK	-	-
141	S13954-42	42 WARMING RACK	1	1
142	S13954-54	54 WARMING RACK	-	-
143	S13951	HEX GRATES, 10.5625	-	-
144	S13952	HEX GRATES, 12	1	1
145	S13953	HEX GRATES, 12.8125	2	2
146	S27387Y	5" BRIQUETTE TRAY ASSEMBLY	-	-
147	S27389Y	6" BRIQUETTE TRAY ASSEMBLY	2	2
148	S27386Y	10" BRIQUETTE TRAY ASSEMBLY	-	-
149	S27388Y	12" BRIQUETTE TRAY ASSEMBLY	1	1
150	S22737Y	36 SMOKER BOX ASSEMBLY	-	-
151	S22735Y	42 / 54 SMOKER BOX ASSEMBLY	1	1
152	S13803	BASTING PAN	1	1
153	S12420	.375 X 9 FLEX TUBE	1	1
154	S14128	RUBBER BUMPER	4	4
155	S12407	.375 X 7.5 FLEX TUBE	4	4
156	S27237-36WY	36 FIREBOX WELDED ASSEMBLY	-	-
157	S27237-42WY	42 FIREBOX WELDED ASSEMBLY	1	1
158	S27237-54WY	54 FIREBOX WELDED ASSEMBLY	-	-
159	S27394	ACCESS COVER	1	1
<b>PARTS NOT SHOWN</b>				
159	S16022	WIRE HARNESS, 13IN. SWITCH TO MASTER CONTROL	2	2
160	S16023	WIRE HARNESS, 14IN. KNOB TO MASTER CONTROL	1	1
161	S16024	WIRE HARNESS, 20IN. KNOB TO MASTER CONTROL	-	-
162	S16025	WIRE HARNESS, 26IN. KNOB TO MASTER CONTROL	2	2
163	S16026	WIRE HARNESS, 33IN. KNOB TO MASTER CONTROL	1	1
164	S16027	WIRE HARNESS, 34IN. SWITCH TO MASTER CONTROL	2	2
165	S16037	WIRE HARNESS, ROTISSERIE	1	1
166	S16038	WIRE HARNESS, FRONT PANEL (36, 42)	1	1
167	S16039	WIRE HARNESS, FRONT PANEL (54)	-	-