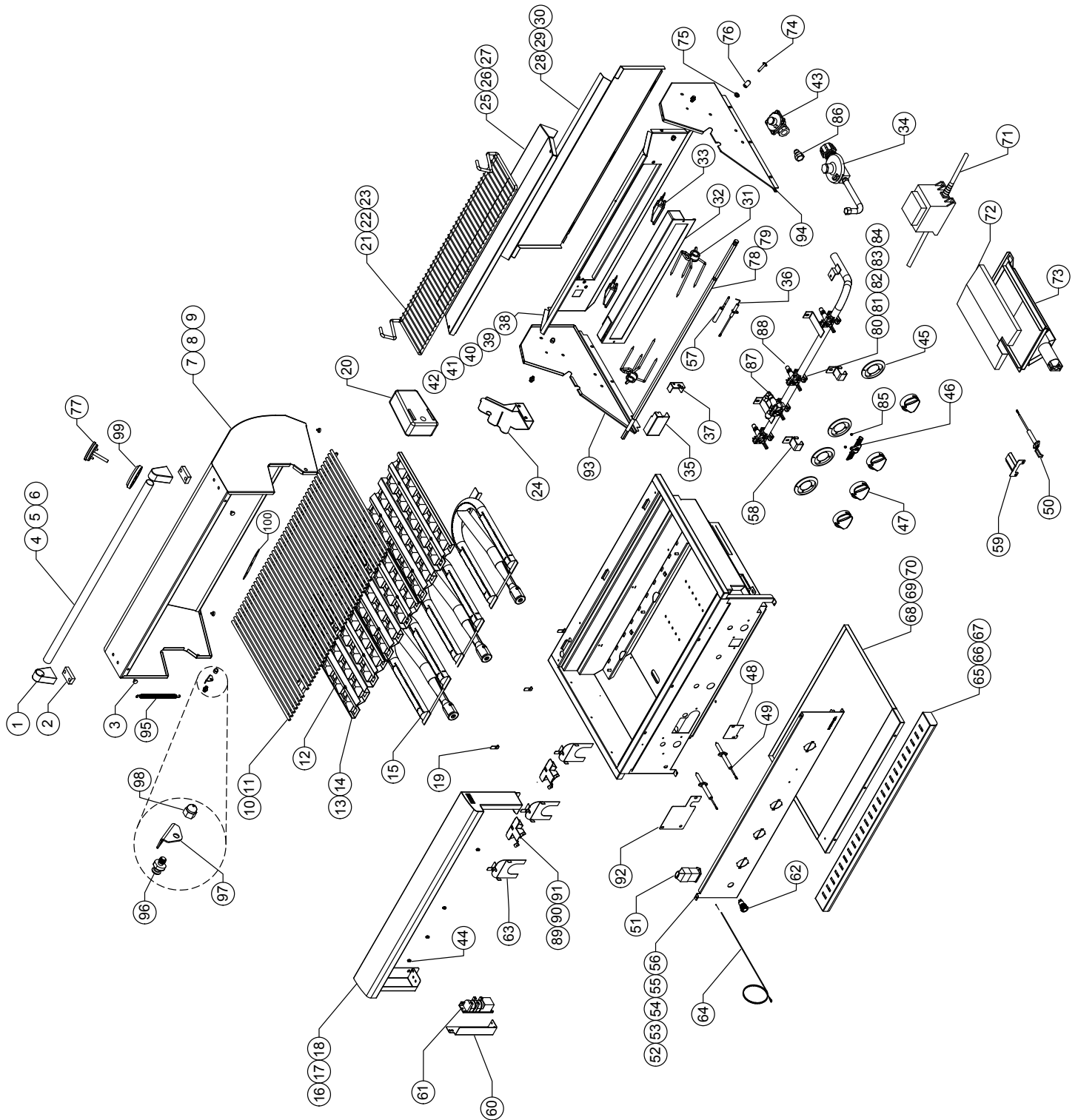


EXPLODED VIEW



REPLACEMENT PARTS LIST

ITEM NO	PART NO.	DESCRIPTION	DHBQ 32G-N	DHBQ 32G-L	DHBQ 32R/S-N	DHBQ 32R/S-L
1	S13113	HANDLE BRACKET	2	2	2	2
2	S13134	HANDLE INSULATOR BRACKET	2	2	2	2
3	S14128	HOOD BUMPER	6	6	6	6
4	S12351	24.6" S/S TUBE HANDLE	-	-	-	-
5	S12352	30.6" S/S TUBE HANDLE	1	1	1	1
6	S12353	36.6" S/S TUBE HANDLE	-	-	-	-
7	S23341-26WY	26" FRONT HOOD WELDED ASSY.	-	-	-	-
8	S23341-32WY	32" FRONT HOOD WELDED ASSY.	1	1	1	1
9	S23341-38WY	38" FRONT HOOD WELDED ASSY.	-	-	-	-
10	S13884	10" S/S GRATES	3	3	3	3
11	S13838	12" S/S GRATES	-	-	-	-
12	S13129	BRIQUETTES ONLY	60	60	60/40	60/40
13	S23218-38Y	26/38 BRIQUETTE TRAY	-	-	-	-
14	S23218-32Y	32 BRIQUETTE TRAY	3	3	3/2	3/2
15	S13365	S/S U-BURNER	3	3	3	3
16	S23336-26WY	26" LANDING LEDGE WELDED ASSY.	-	-	-	-
17	S23336-32WY	32" LANDING LEDGE WELDED ASSY.	1	1	1	1
18	S23336-38WY	38" LANDING LEDGE WELDED ASSY.	-	-	-	-
19	S23229	SPACER, BRIQUETTE TRAY	6	6	6	6
20	S16340	ROTISSERIE MOTOR	1*	1*	1	1
21	S13959	26" WARMING RACK	-	-	-	-
22	S13960	32" WARMING RACK	1	1	1	1
23	S13961	38" WARMING RACK	-	-	-	-
24	S23343	ROTISSERIE BRACKET	1*	1*	1	1
25	S23227-26	26" TOP REAR HOOD	-	-	-	-
26	S23227-32	32" TOP REAR HOOD	1	1	1	1
27	S23227-38	38" TOP REAR HOOD	-	-	-	-
28	S23220-26	26" BOTTOM REAR HOOD	-	-	-	-
29	S23220-32	32" BOTTOM REAR HOOD	1	1	1	1
30	S23220-38	38" BOTTOM REAR HOOD	-	-	-	-
31	S13865	S/S MEAT FORKS	1*	1*	1	1
32	S13330	INFRARED ROTISSERIE	-	-	1	1
33	S16270	HALOGEN LIGHT	2	2	2	2
34	S15344	LP REGULATOR W/ HOSE	-	1	-	1
35	S22083	COVER, I.R., IGNITER	-	-	1	1
36	S16268	I.R. IGNITER	-	-	1	1
37	S22084	BRACKET, MOUNT IGNITER	-	-	1	1
38	S23221-26G	REAR HOOD LINER, 26" G	-	-	-	-
39	S23221-32G	REAR HOOD LINER, 32" G	1	1	-	-
40	S23221-32R	REAR HOOD LINER, 32" R	-	-	1	1
41	S23221-38G	REAR HOOD LINER, 38" G	-	-	-	-
42	S23221-38R	REAR HOOD LINER, 38" R	-	-	-	-
43	S15303	NG REGULATOR	1	-	1	-
44	S16355	LED, BLUE	3	3	3	3
45	S13199	KNOB, BEZEL	3	3	4	4
46	S13201	DELTA HEAT LOGO	1	1	1	1
47	S13195	DELTA HEAT KNOB	3	3	4	4
48	S23327	MANIFOLD PLATE COVER	1	1	1	1
49	S16274-1	SPARK IGNITER (U-BURNER)	2	2	2/1	2/1
50	S16288	IGNITER, SEAR ZONE	1*	1*	1	1
51	S16272	BATTERY PACK	1	1	1	1

N = NATURAL GAS
L = PROPANE
R/S = ROTISSERIE/SEAR

REPLACEMENT PARTS LIST - CONT.

ITEM NO	PART NO.	DESCRIPTION	DHBQ 32G-N	DHBQ 32G-L	DHBQ 32R/S-N	DHBQ 32R/S-L
52	S23338-26G	PANEL, FRONT, 26, G	-	-	-	-
53	S23338-32G	PANEL, FRONT, 32, G	1	1	-	-
54	S23338-32R	PANEL, FRONT, 32, R	-	-	1	1
55	S23338-38G	PANEL, FRONT, 38, G	-	-	-	-
56	S23338-38R	PANEL, FRONT, 38, R	-	-	-	-
57	S16303	SAFETY THERMOCOUPLE	-	-	1	1
58	S23280	BRACKET, MANIFOLD STIFFENER	2	2	2	2
59	S23259	IGNITER SHIELD	1*	1*	1	1
60	S23216	BRACKET, IGNITION MODULE	1	1	1	1
61	S16317	IGNITION MODULE	1	1	1	1
62	S16196	ILLUMINATION SWITCH, BLUE	1	1	1	1
63	S23206	BAFFLE, AIR STOP	3	3	3	3
64	S13876	HOLDER, MATCH W/ LANYARD	1	1	1	1
65	S23203-26	26" DRIP PAN HANDLE	-	-	-	-
66	S23203-32	32" DRIP PAN HANDLE	1	1	1	1
67	S23203-38	38" DRIP PAN HANDLE	-	-	-	-
68	S23217-26	DRIP PAN, 26	-	-	-	-
69	S23217-32	DRIP PAN, 32	1	1	1	1
70	S23217-38	DRIP PAN, 38	-	-	-	-
71	S16281-1	AC ADAPTER	1	1	1	1
72	S13367	WIRE MESH (SEAR ZONE)	1*	1*	1	1
73	S13366	I.R. SEAR ZONE BURNER	1*	1*	1	1
74	S14111	SCREW, 1/4-20, PH TRUSS S/S	2	2	2	2
75	S14105	NUT, 1/4-20, SERR., HEX, FLNG S/S	2	2	2	2
76	S14224	SPACER, HOOD 1/2 X 7/8 S/S TUBE	2	2	2	2
77	S15372	THERMOMETER, DHBQ-D	1	1	1	1
78	S13883	S/S SPIT ROD 26"/32"	1*	1*	1	1
79	S13890	S/S SPIT ROD 38"	-	-	-	-
80	S12751YN	MANIFOLD ASSY. NG, 26G	-	-	-	-
	S12751YL	MANIFOLD ASSY. LP, 26G	-	-	-	-
81	S12752GYN	MANIFOLD ASSY. NG, 32G	1	-	-	-
	S12752GYL	MANIFOLD ASSY. LP, 32G	-	1	-	-
82	S12752RYN	MANIFOLD ASSY. NG, 32R	-	-	1	-
	S12752RYL	MANIFOLD ASSY. LP, 32R	-	-	-	1
83	S12753GYN	MANIFOLD ASSY. NG, 38G	-	-	-	-
	S12753GYL	MANIFOLD ASSY. LP, 38G	-	-	-	-
84	S12753RYN	MANIFOLD ASSY. NG, 38R	-	-	-	-
	S12753RYL	MANIFOLD ASSY. LP, 38R	-	-	-	-
85	S14232	LOGO CLIP	2	2	2	2
86	S12602	BRASS COUPLING	-	1	-	1
87	S15136	SAFETY GAS VALVE (I.R. BURNER)	-	-	1	1
88	S15132	GAS VALVE	3	3	3	3
89	S23210-26	BRACKET, CROSSOVER, 26	-	-	-	-
90	S23210-32	BRACKET, CROSSOVER, 32	2	2	2/1	2/1
91	S23210-38	BRACKET, CROSSOVER, 38	-	-	-	-
92	S23326	ROTIS VALVE COVER	1	1	1	1
93	S23335-L	REAR HOOD SIDE, LH	1	1	1	1
94	S23335-R	REAR HOOD SIDE, RH	1	1	1	1
95	S14362	SPRING	2	2	2	2
96	S14194	STAND-OFF, SPRING	4	4	4	4
97	S23337	BRACKET, SPRING	2	2	2	2

REPLACEMENT PARTS LIST - CONT.

ITEM NO	PART NO.	DESCRIPTION	DHBQ 32G-N	DHBQ 32G-L	DHBQ 32R/S-N	DHBQ 32R/S-L
98	S14195	ACORN NUT	4	4	4	4
99	S13216	BEZEL, THERMOMETER	1	1	1	1
100	S21567	PLATE, THERMOMETER	1	1	1	1
PART NOT SHOWN						
	S15133-47	ORIFICE, #47	-	-	-	-
	S15133-49	ORIFICE, #49	3	-	3	-
	S15133-56	ORIFICE, #56	-	3	-	3
	S15108-51	ORIFICE, #51, ROTIS	-	-	1	-
	S15108-57	ORIFICE, #57, ROTIS	-	-	-	1
	S16468	WIRE HARNESS W/ LED ASSEMBLY, DHBQ26G-D	-	-	-	-
	S16469	WIRE HARNESS W/ LED ASSEMBLY, DHBQ32G-D	1	1	-	-
	S16466	WIRE HARNESS W/ LED ASSEMBLY, DHBQ32R-D	-	-	1	1
	S16470	WIRE HARNESS W/ LED ASSEMBLY, DHBQ38G-D	-	-	-	-
	S16471	WIRE HARNESS W/ LED ASSEMBLY, DHBQ38R-D	-	-	-	-
	S12601	ELBOW, BRASS 3/8 CC X 1/8 FIP (GAS VALVE INSIDE)	-	-	1	1
	S12640	I.R. BRASS ELBOW, (I.R. BURNER SIDE)	-	-	1	1
	S12401	I.R. FLEX TUBING	-	-	1	1
	S16290	FUSE, 6.3A 250V 5X20MM SLOW BLOW GLASS	1	1	1	1
	S14121	6-32 X 1/4 PH PAN TYPE F BEZEL SCREW	6	6	8	8
	S14275	SCREW, 10-24 X 1/2, PH, PAN, TYPE F, S/S	29	29	29	29
	S15141	BRASS, PLUG	1	1	-	-